



1,010 KVA Standby **808 KW**

Standby Power (ESP): In case of failure of reliable mains supply, variable electricity is used to power the load. ESP complies with ISO8528. Overloading is not allowed.

908.8 KVA Prime **727 KW**

Prime Power (PRP): It is used to supply variable electricity to the load, for unlimited operating hours per year. PRP complies with ISO 8528. According to ISO3046, 1 hour in a 12-hour operating period 10.0% Used for overload.

Engine

In Lomar Generator engine products; high performance, providing low fuel consumption, with mechanical, electronic governor or Engine Control Unit depending on the type, oil, air and fuel filters can be changed, complying with ISO 3046, ISO 8528, BS 5514, DIN 6271 standards. It uses appropriate, high-tech engine brands.

Engine Specifications		
Engine Brand	SDEC	
Engine Model	SC33W1150D2	
Engine Power (Standby/Prime)	808 kW (Standby)	727 kW (Prime)
Engine Speed	1500 d/dk	
Configuration	Inline Engine	
Engine Stroke	4-Stroke	
Number of Cylinders	6	
Cylinder Distance	32827 cc	
Bore & Stroke	180x215	
Compression Ratio	15:1	
Governor	Electronic	
Air Aspiration	Turbocharger with AfterCooler	
Fuel Injection	Direct	
Cooling System	Air	
Engine Oil Capacity	75 L	
Fuel Consumption	Liters/hour (50%)	100
	Liters/hour (75%)	146
	Liters/hour (100%)	194

Alternator

Lomar Generator alternator PRODUCTS have steel body design, robust structure, maintenance-free bearing system (brushless), self-excitation system, electronic type voltage REGULATOR, BS 4999-5000; CEI EN 60034-1; IEC It uses HIGH technology alternator brands that comply with 60034-1; VDE 0530, OVE M10, NF 51-100,111; NEMA MG 1.22.Standards.

Alternator Specifications	
Power Factor	0,8
Isolation Class	H
Protection Class	IP21 - IP23
Output Voltage	230/400 Vac
Output Frequency	50 Hz
Connection Type	STAR
Design	4 Poles - Brushless

Control System

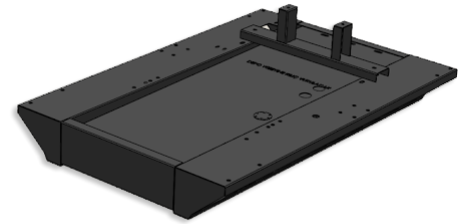
Lomar Generator control panels have a structure that is easy to use and secure software updates can be easily made via USB ports. Optionally, remote control can be provided via ETHERNET and GPRS. The panel body is made of steel sheet and painted with electrostatic powder paint. Electronic parts are isolated. and has a waterproof design.



Control System Specifications	
Automatic Control System with LCD Display	Remote monitoring possibility
Multifunctional operating possibility	Support different languages
Programmable VIA USB, RS-232 and GSM	

Chassis, Cabin and Fuel Tank

Lomar Generator chassis have a modular design and are manufactured from steel. The tank is mounted to the chassis with bolts. Engine alternator radiator connections are made with vibration mounts to minimize vibration. Special chassis and fuel tank designs can be made in line with customer demands.



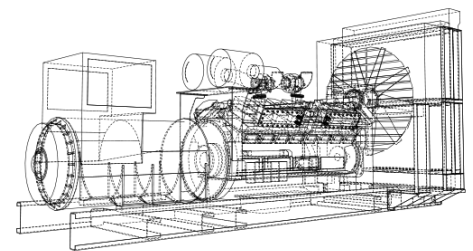
Cabinet Specifications	
Cabinet design that facilitates generator maintenance	Emergency stop button ON the cabin
Transparent control panel window	Acoustic FOAM that provides sound insulation
Exhaust silencer hidden in the cabin	Engine cooling air ducts
Corrosion and rust resistant electrostatic powder paint	Possibility to refuel outside the cabin

Options		
Transfer Board	Analog Indicators	Protection Switch
24 Hour Fuel Tank	External Type Fuel Tank	Special Chassis Color
Synchronous System	Custom Cabinet Color	Electronic Governor Application
Remote Monitoring MODULE	EARTHQUAKE SENSOR	Special Type Silencer

Quality Standards

All generating sets produced by Lomar Generator have TSE, CE and ISO 9001 certificates.

Technical information and values comply with ISO8528, ISO3046, NEMA MG1.22, IEC 600341, BS 49995000, VDE 0530 standards.



Technical Dimensions							
CABIN GROUP				CABINLESS GROUP			
WIDTH	1000 mm	SIZE	2300 mm	WIDTH	1000 mm	SIZE	1900 mm
HEIGHT	1420 mm	WEIGHT	957 kg	HEIGHT	1380 mm	WEIGHT	782 kg

